

S15C-MEZ Process Data Function

January 15th, 2026

This document covers the installation and use of a function for Siemen's TIA Portal software package. This function handles cyclic IO-Link Process Data In and Process Data Out from a Banner S15C-MEZ sensor via an IO-Link Master to a Siemens PLC. The function covers parsing and display of the S15C-MEZ sensor Process Data In and Process Data Out.

Components

Banner S15C R45C Library v16.zal16

There are two methods for the process data. The first is used when creating a connection to Banner's IO-Link masters. The second set of instructions are for systems using other manufacturer's IO-Link masters.

Installation Instructions

1. Open a project.
2. Go to the Open Global Library option in the Libraries tab in TIA Portal v16 or greater.



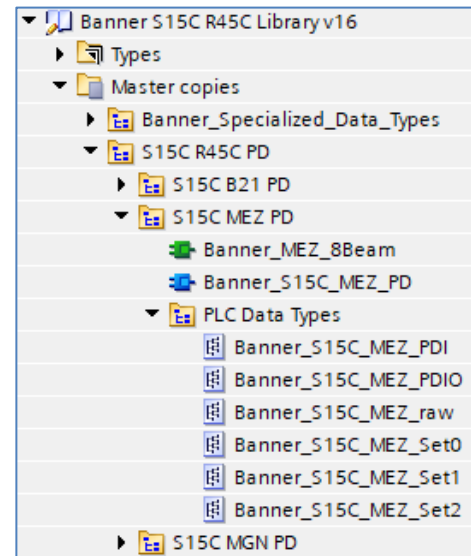
3. Switch the “Files of type” to Compressed libraries. Go to the location of the compressed library.
4. Press the Open button and the library will be uncompressed and opened.
5. The library is now accessible in the Libraries tab in v16 or greater.

Setup of S15C-MEZ with a Banner DXMR

1. Go to Device and Networks to configure the DXMR90-4K or DXMR110-8K. Add the DXMR if it has yet to be added to the system.
2. Open the IO-Link Generic Devices and select the proper module. The 32/32 byte option has been selected for port 1. Make note of the I address for the Slot 2 which represents Port 1. Slot 2 starts are 10. The other number needed is I14. The data for the port start at that point (I14). The previous four bytes represents Port Status, Process Data In Size, and Process Data Out Size.

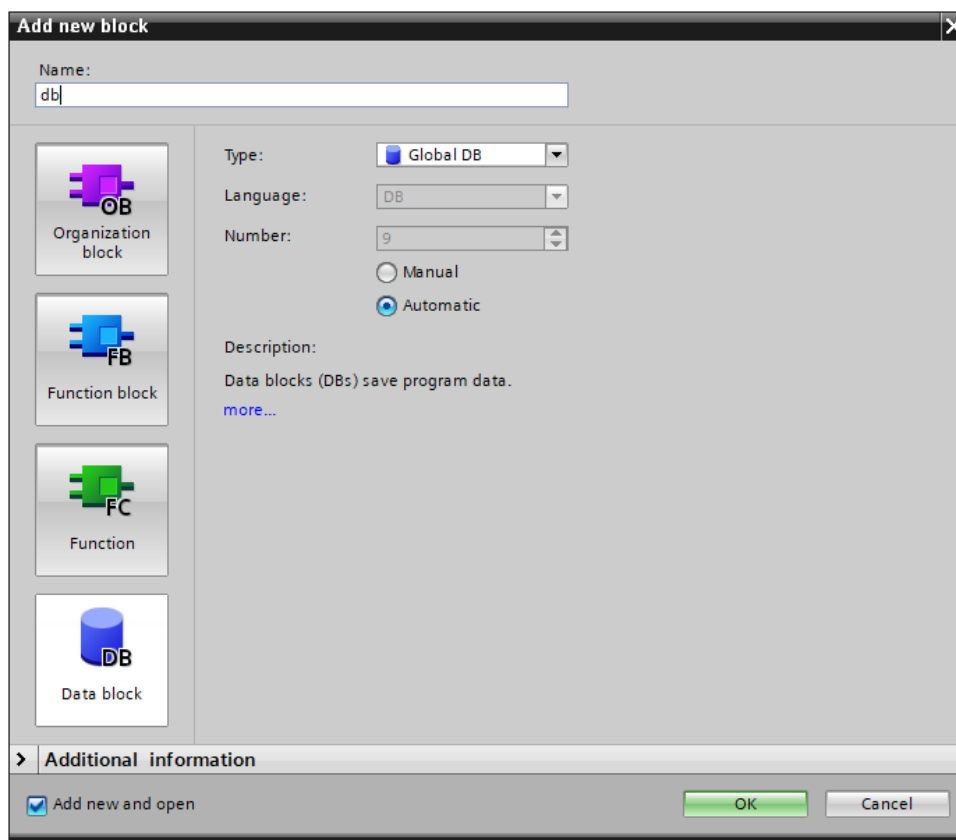
Module	Rack	Slot	I address	Q address	Type
▼ dxm	0	0			1-port Device
▶ Interface	0	0 X1			dxm
Banner IO-Link Master Info_1	0	1	1...9		Banner IO-Link Master Info
IO-Link In/Out 32/32 Byte + Status_1	0	2	10...45	1...46	IO-Link In/Out 32/32 Byte + Status

3. Drag the Banner_S15C_MEZ_PDI, Banner_S15C_MEZ_PDIO, Banner_S15C_MEZ_raw, Banner_S15C_MEZ_Set0, Banner_S15C_MEZ_Set1, and Banner_S15C_MEZ_Set2 to the PLC Data Types area under your PLC.
4. Drag the Banner_S15C_MEZ_8Beam and Banner_S15C_MEZ_PD to the Program Blocks area.
5. Drag the necessary tags from Banner_Specialized_Data_Types. The tags used in this example is "Banner_32in" and "Banner_32out". These tags represent the full raw process data along with port status information.
6. Go to PLC Tags. Create four tags. Two of the tags are for the full data structure while the second set represents the raw Process Data from the IO-Link Master. In this example, Tag table_1 was created, the tags "S15C MEZ IOLM1 01 PDI" and "S15C MEZ IOLM1 01 PDO" was created using a Data Type of "Banner_32In" and "Banner_32Out". This naming convention calls out the type of sensor in question as well as the specific IO-Link Master and port number where the sensor is connected. A different IO-Link Master might be named IOLM2 or IOLM3, for instance, and other specific sensors may be connected to different port numbers. The "I" address found in step 2 is tied to this new tag. The second set of tags are named "Banner_S15C_MEZ_IOLM1_01_inRaw" and "Banner_S15C_MEZ_IOLM1_01_outRaw" and use "Banner_S15C_MEZ_raw" and Sint Data Type. These are the tags that will be used in the Function block.



Name ▼	Data type	Address
▶ S15C MEZ IOLM1 01 PDO	"Banner_32Out"	%Q1.0
▶ S15C MEZ IOLM1 01 PDI	"Banner_32In"	%I10.0
S15C MEZ IOLM1 01 outRaw	Sint	%QB3
▶ S15C MEZ IOLM1 01 inRaw	"Banner_S15C_MEZ_raw"	%I14.0

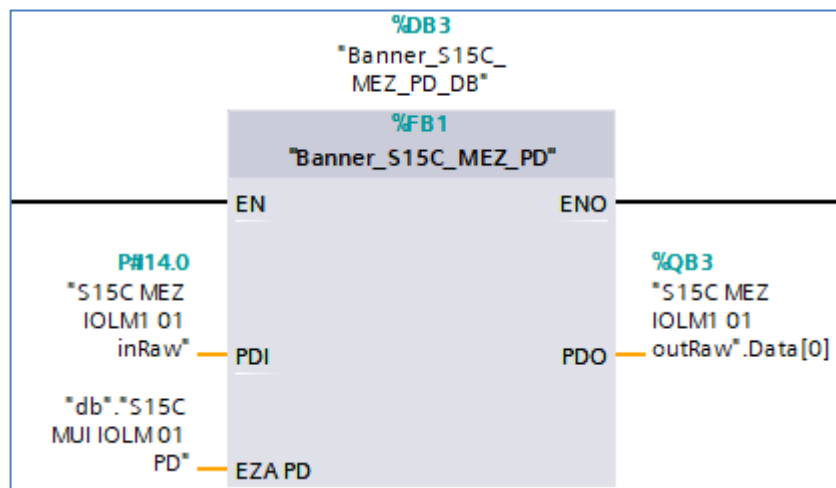
7. Go to Program blocks. Add a new Data block if necessary. In this example the new data block is named "db".



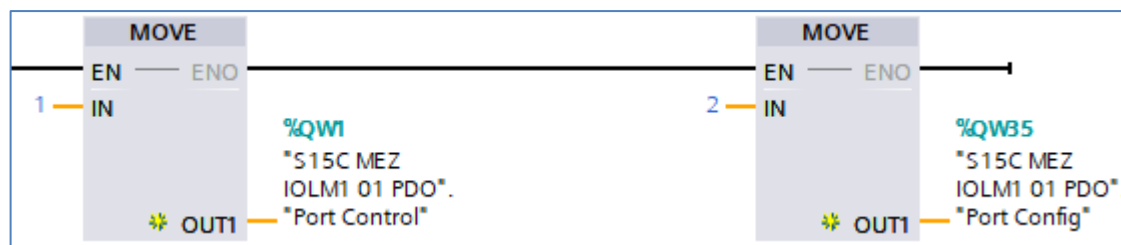
8. In the new data block, create a new tag to represent the parsed Process Data In for our S15C MEZ. The tag name again calls out the type of sensor, the IO-Link Master, and the port number. Use the data type "Banner_S15C_MEZ_PDIO" for the new tag.

▼ S15C B21 IOLM1 01 PD	"Banner_S15C_MEZ_PDIO"
■ ▼ PDI	"Banner_S15C_MEZ_PDI"
■ Register Set to Read	USInt
■ Register Read Successful	Bool
■ Counter Value	USInt
■ ▶ S0	Array[1..240] of Bool
■ ▶ S1	"Banner_S15C_MEZ_Set1"
■ ▶ S2	Array[241..480] of Bool
■ PDO - Reg to Read	USInt

9. Add the “Banner_S15C_MEZ_PD” function to an OB ladder. Link the “PDI” and “PDO” to the raw Process Data variable from step 5. Link the “EZA PD” to the parsed Process Data variable from step 7.



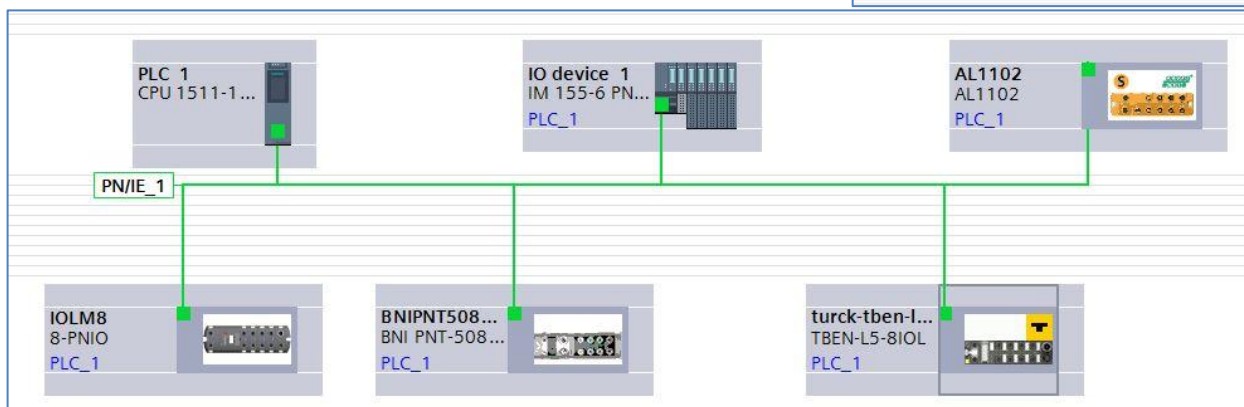
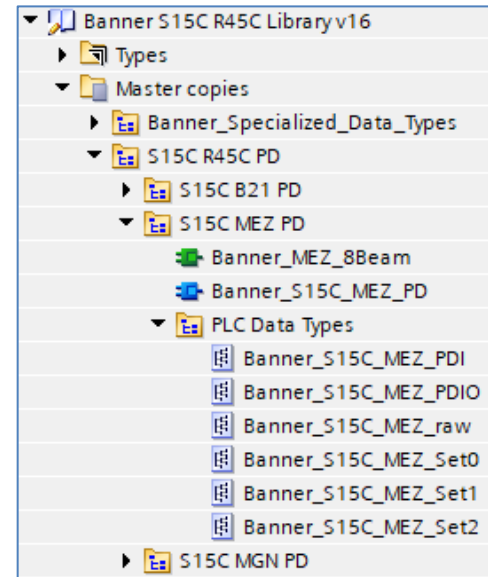
10. The final step is to configure the IO-Link output control. This is done by sending a 1 to Port Control and a 2 to Port Config. Both parameters are part of the tag created in step 6 “S15C MEZ IOLM1 01 PDO”.



11. Process Data setup is complete.
 12. Compile and download the configuration to the PLC, then go online. Open the “db” data block and click Monitor all. You should see parsed S15C Process Data In.

Setup of S15C-MEZ with other IO-Link Masters

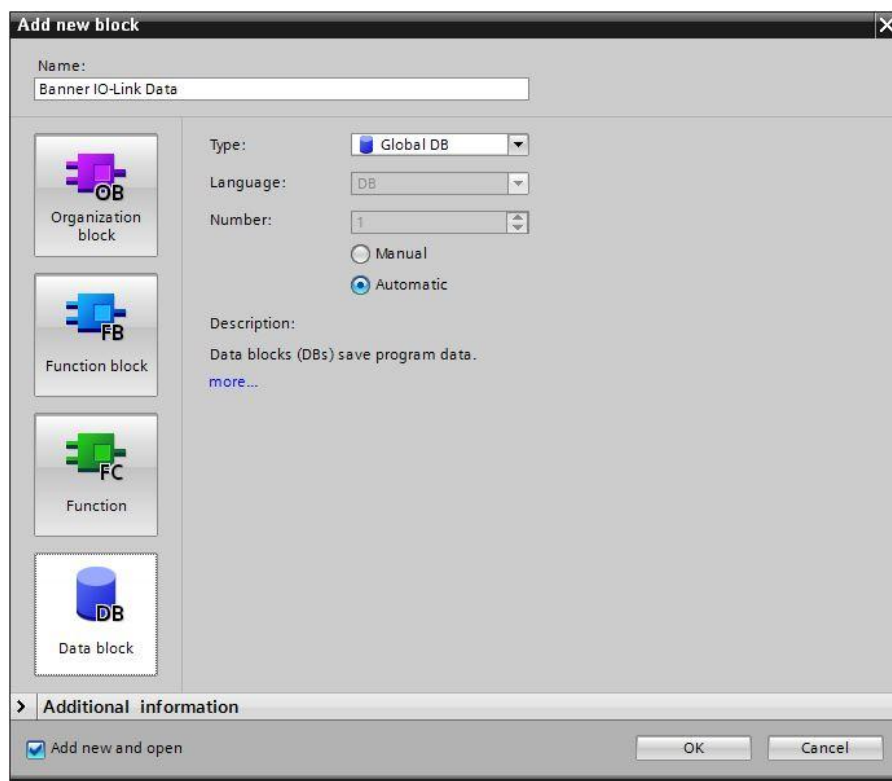
1. The Banner IO-Link Library will now be in the Global Library List. Expand the Master copies section.
2. Expand the S15C MEZ PD folder in the S15C R45C PD folder.
3. Drag Banner_S15C_MEZ_PD and Banner_MEZ_8Beam to the Program Blocks area under your PLC.
4. Drag Banner_S15C_MEZ_PDI, Banner_S15C_MEZ_PDIO, Banner_S15C_MEZ_raw, Banner_S15C_MEZ_Set0, Banner_S15C_MEZ_Set1, and Banner_S15C_MEZ_Set2 to the PLC Data Types area under your PLC.
5. Go to Devices and networks to configure the system as necessary. Below is an example of what a configuration might look like. This example shows 5 different IO-Link Masters connected to the same PLC.



6. Click on the relevant device and configure the IO-Link Master as necessary. Refer to the documentation for the IO-Link Master. Recall that a S15C-MEZ requires 32 bytes of space for the Process Data In and 1 byte for the Process Data Out.
7. Record the "I" address where this S15C-MEZ Process Data In is to be stored, as the address will be required in the next step. In this example, 32 bytes of Process Data In for port 1 on the IO-Link Master will be stored starting at I68. The one byte of Process Data Out will be in Q68.
8. Go to PLC Tags. Add a new tag table, if desired, then create a new tag to represent the raw Process Data from the IO-Link Master. In this example the tag "S15C MEZ raw PDI" was created using a Data Type of "Banner_S15C_MEZ_raw". Another tag is created called "S15C MEZ raw PDO". This one is a Byte data type and is linked to the other memory address found in step 7.

S15C MEZ IOLM1 01 outRaw	SInt	%QB68
▶ S15C MEZ IOLM1 01 inRaw	"Banner_S15C_MEZ_raw"	%I68.0

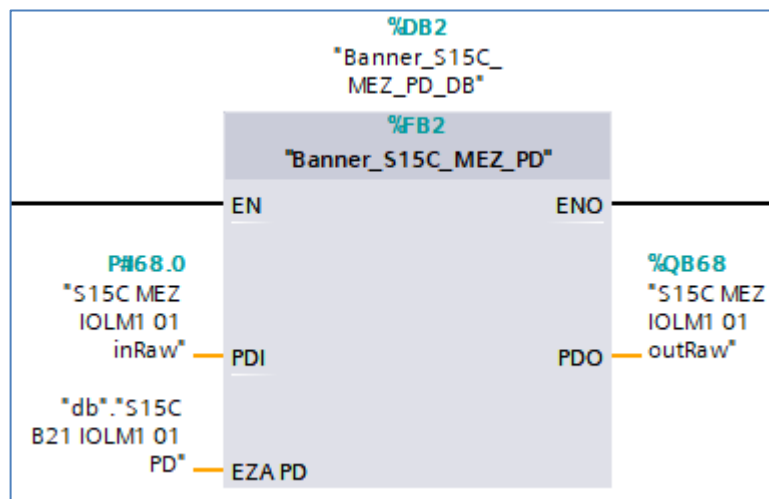
9. Go to Program blocks. Add a new Data block if necessary. In this example the new data block is named "Banner IO-Link Data".



10. In the new data block, create a new tag to represent the parsed Process Data for our S15C-MEZ. The tag name again calls out the type of sensor, the IO-Link Master, and the port number. Use the data type "Banner_S15C_MEZ_PDIO" for the new tag.

▼ S15C B21 IOLM1 01 PD	"Banner_S15C_MEZ_PDIO"
■ ▼ PDI	"Banner_S15C_MEZ_PDI"
■ Register Set to Read	USInt
■ Register Read Successful	Bool
■ Counter Value	USInt
■ ▶ S0	Array[1..240] of Bool
■ ▶ S1	"Banner_S15C_MEZ_Set1"
■ ▶ S2	Array[241..480] of Bool
■ PDO - Reg to Read	USInt

11. Add the “Banner_S15C_MEZ_PD” function to an OB ladder. Link the “PDI” and “PDO” to the raw Process Data variables from step 8. Link the “EZA PD” to the parsed Process Data variable from step 10. For the “Include Binary” decision, see Appendix A.



12. Process Data setup is complete.
13. Compile and download the configuration to the PLC, then go online. Open the “Banner IO-Link Data” data block and click Monitor all. Expand “S15C MEZ IOLM1 02 PD”. This shows all the Process Data for the device. Variable “Register Set” controls which of the three process data configurations is being displayed. The data is shown in either PDI 0, PDI 1, or PDI 2 based on the value of “Register Set”.

	Name	Data type
1	Static	
2	S15C MEZ IOLM1 02 PD	"Banner_S15C_MEZ_PDIO"
3	PDI	"Banner_S15C_MEZ_PDI"
4	Register Set to Read	USInt
5	Register Read Successful	Bool
6	Counter Value	USInt
7	S0	Array[1..240] of Bool
8	S1	"Banner_S15C_MEZ_Set1"
9	S2	Array[241..480] of Bool
10	PDO - Reg to Read	USInt

Appendix A

S15C-MEZ Process Data

The S15C-MEZ has 32 bytes of Process Data In and 1 byte of Process Data Out, as shown below. There are three Sets of Data for the MEZ. The Set Currently giving data is determine by what value is in “PDO - Reg to Read”

ProcessDataIn "Process Data In" id=V_Pd_InData

bit length: 256

data type: 256-bit Record (subindex access not supported)

subindex	bit offset	data type	allowed values	default value	acc. restr.	mod. other var.	excl. from DS	name	description
1	0	4-bit UInteger	0..1					Register Set To Read	Register Set To Read
2	4	Boolean	false = False, true = True					Register Read Successful	Register Read Successful
5	8	8-bit UInteger	0..255					Counter Value	Counter Value
6	16	16-bit UInteger	0..65535					Read Set Register 01 Value	Register Value. Data that was read from register.
7	32	16-bit UInteger	0..65535					Read Set Register 02 Value	Register To Read. Register to read from ModBus device.
8	48	16-bit UInteger	0..65535					Read Set Register 03 Value	Register Value. Data that was read from register.
9	64	16-bit UInteger	0..65535					Read Set Register 04 Value	Register To Read. Register to read from ModBus device.
10	80	16-bit UInteger	0..65535					Read Set Register 05 Value	Register Value. Data that was read from register.
11	96	16-bit UInteger	0..65535					Read Set Register 06 Value	Register To Read. Register to read from ModBus device.
12	112	16-bit UInteger	0..65535					Read Set Register 07 Value	Register Value. Data that was read from register.
13	128	16-bit UInteger	0..65535					Read Set Register 08 Value	Register Value. Data that was read from register.
14	144	16-bit UInteger	0..65535					Read Set Register 09 Value	Register Value. Data that was read from register.
15	160	16-bit UInteger	0..65535					Read Set Register 10 Value	Register Value. Data that was read from register.
16	176	16-bit UInteger	0..65535					Read Set Register 11 Value	Register Value. Data that was read from register.
17	192	16-bit UInteger	0..65535					Read Set Register 12 Value	Register Value. Data that was read from register.
18	208	16-bit UInteger	0..65535					Read Set Register 13 Value	Register Value. Data that was read from register.
19	224	16-bit UInteger	0..65535					Read Set Register 14 Value	Register Value. Data that was read from register.
20	240	16-bit UInteger	0..65535					Read Set Register 15 Value	Register Value. Data that was read from register.

ProcessDataOut "Process Data Out" id=V_Pd_OutData

bit length: 8

data type: 8-bit Record (subindex access not supported)

subindex	bit offset	data type	allowed values	default value	acc. restr.	mod. other var.	excl. from DS	name	description
1	0	8-bit UInteger	0..2					Register Set To Read	Register Set To Read

This function intelligently parses this Process Data into its component pieces.